

BUGLE

Published by
Kurow Information Centre
as a service to our community



Issue 522
Wednesday
20 October 2021



WAITAKI ROAD RAIL BRIDGE

WAITAKI VALLEY COMMUNITY CAR



PHONE
4360 950
TEXT
027 282 0615

**Due to rising petrol prices we are increasing
the price of our Timaru & Dunedin trips by \$5
This will be effective from the 1st November
Dunedin is now \$100 and Timaru \$70**



We welcome the opportunity to offer you a review on your business, personal or farm insurances.

Talk to the team at your local Aon Oamaru branch on

03 434 0080

10 Coquet Street, Oamaru

TO BOOK A COMMUNITY CAR: Phone 027 282 0615 or 4360 950

BUGLE PUBLICATION:

The Bugle is at the Kurow Information Centre - Please send your pieces to kurowbugle@gmail.com and please ensure they are in by strictly 12pm on the Friday before publication or they won't be in until the following issue.

WAITAKI VALLEY SCHOOL POOL

If we are at Level 1 on Tuesday 26th October the School Pool will open to the public. If we remain at Level 2, the School Pool will only be open for school use. Pool Keys are available for purchase through the school office or the Information Centre at Level 1. 1 Week \$20, 1/2 Season \$70, Full Season \$100. All require a \$50 bond.

KUROW MUSEUM

Labour Weekend opening hours: Saturday & Sunday 10am-2pm, Monday 10am-12.30pm.

The Museum Committee is seeking volunteers to cover weekend opening hours. Please express your interest by calling Kurow Museum & Information Centre on: 4360 950 or speak with a committee member.

There will be guidelines for opening explained to all volunteers.

KUROW RESOURCE RECOVERY PARK

Open Wednesday & Sunday 1-4pm.

WAITAKI COLLIE CLUB AGM

26th October, 7.30pm at the collie club rooms, Old Slip Road. Apologies to Jody: 027 353 2874

WAITAKI VALLEY PHONE BOOKS:

Get your address and phone/cell/email in the Waitaki Valley Phonebook: ring Anna or Seanne on 4360 950 or just leave a message for us to ring you back. We are even happier to receive an email on info@kurow.org.nz with your details. We constantly update our versions as we receive new numbers. There is also lots of space to record the contact details of your loved ones from out of the area.

NZ COVID TRACER BOOKLETS

Are available for free at the Info Centre. If you're not comfortable using the Tracer app these booklets are ideal to keep track of where you've been and who you've seen.



Specialising in rural real estate and lifestyle blocks

Barry and John are available and only too happy to assist you with all your real estate needs. All queries and friendly chats are treated in total confidentiality

Please get in touch at anytime, we are happy to help where we can

Barry Meikle Rural Sales Consultant
M 027 436 5131 E barry.meikle@pb.co.nz

John McCone Rural Sales Consultant
M 027 221 9133 E john.mccone@pb.co.nz



Property Brokers  Proud to be here

pb.co.nz
Property Brokers Licensed REAA 2008

GRANTS AVAILABLE THE WAIMATE AGRICULTURAL TRUST

is a trust established to provide financial assistance to students of any form of agriculture for the purpose of their education

Students must have lived within the qualifying area for a minimum of 2 years

The Boundaries the trust operates within are from

The Waitaki River in the south

to the Pareora River in the north

and the western boundaries extend to Lake Benmore and the Otaio Gorge

If you feel you may be eligible for a grant and would like more information

Please email

admin@waimateaccountants.co.nz

Or Telephone 03 689 8551

Application forms are also available at Waimate Accountants Ltd, 52 Queen Street, Waimate 7924



APPLICATIONS CLOSE 31ST OCTOBER 2021



NEXT ISSUE: 3rd November 2021

COPY IN: 12pm 29/10/2021

email: kurowbugle@gmail.com phone: **03 4360 950**

or post it to: Kurow Museum & Info Centre, 57 Bledisloe St, PO Box 56, Kurow.



Dry Wood Still Available
Green wood specials now on
Willow and Old Man Pine
Delivering through all ALERT levels

PH 027 3388 513 A/H 03 4264 963



ONE SMART COFFEE

Available for events and gatherings

Phone Linda on 027 27 69857



**THE
GARAGE DOOR
CENTRE**

Distributors of

DOMINATOR

Garage Door Systems

New Sales & Service

In the Waitaki Valley

Call Brian **0274 335 299**

S&S PROPERTY CARE



**Weeding & Garden
Care**

Shrub & Tree Maintenance

Lawn Mowing (ride on available)

And much much more ...

*We are your local go to for all
your property needs*

Call or text Steve on: 021 774 019

\$500 Donation

List and sell your property with me in the Waitaki Valley and I'll donate \$500 to the charity, community group or sports club of your choice.

On all properties sold by me from 1 August 2021 to 31 March 2022.
Terms & conditions apply.

Call me today for your free appraisal!

Ross McRobie

Residential/Commercial Sales Consultant

M 027 432 9892 E ross.mcrobie@pb.co.nz



Property Brokers

Proud to be here

pb.co.nz

Property Brokers Ltd Licensed REAA 2008 | PB051542



Margo Barrett
Dip. atm
Remedial Massage Therapist

0221 0221 56
margo@mbmassage.co.nz
www.mbmassage.co.nz

52 Bledisloe St, Kurow



WAITAKI COLLIE CLUB AGM

To be held at the collie club rooms on Old Slip Road, on
Tuesday, October the 26th at 7.30pm.

Everyone is welcome to attend.

Apologies to Jody Macdonald 0273532874

Lakeside Laundries

Behind Otematata Hotel

Open 24/7



Soap dispenser

Money change machine

4 washing machines/4 dryers

All welcome

Owner Debbie Smith 027 229 4376

PILATES IN THE VINES

Wai Wellness
x
River T Winery

Every Saturday
9:30am - onwards
*\$40 per ticket**

To book email
laurawaiwellnessnz@outlook.com

**Beginning 30th October*

**each ticket entitles you to 30 minute pilates +
sharing platter & a glass of Wine*





We are hiring!

Looking for a part time job?
Are you a people person who enjoys driving?

Go to www.gobus.co.nz/JobOpportunities to apply!

For any enquiries call us on 03 474 6658



FULL
TRAINING
PROVIDED

JUSTICES OF THE PEACE IN KUROW:

- Heather Gray 027 436 8348
- John Sturgeon 021 355 172
- John Currie 027 453 1165
- Contact can also be made via the Kurow Info Centre 03 4360 950

JPs are available by appointment only to:

- Witness signatures on documents
- Certify copies of documents
- Take oaths, declarations, affidavits or affirmations
- Confirm identity

Justice of the Peace visit checklist:

- Do not sign anything beforehand
- Take photo identification
- Remember to take original as well as the copy to be certified
- Check that a NZ JP can complete your documentation

The service is free of charge

**Heritage North Otago
Charitable Trust Incorporated**

SCHOLARSHIP/GRANT

Direct descendants of service personnel from North Otago who served in New Zealand or Commonwealth forces during the **Second World War or in combat since**, may apply to be considered for a scholarship/grant for health, education or special needs.

Application forms are available from the secretary, June Jones, 10 Brinkburn Street, Oamaru. Phone 03 434 7267 or email junejonesnz@gmail.com

APPLICATIONS CLOSE with the Secretary by **5pm Friday, 5th November 2021**



**Ear Health Waitaki is coming to the
Kurow Medical Centre on
Monday 15th November**

Providing best practice wax removal and maintenance for healthy ears.
If you would like more details or would like to be seen on the above date,
please ring on **(03) 434 7228**



**Rural
Lifestyle &
Property Sales**

KITTY CULP

Licensed under REA ACT

027 346 0846

kitty@oaoamaru.nz

ONE AGENCY
THE PROPERTY SPECIALISTS

Kurow Medical Centre

8 Wynyard St, Kurow
P: 03 4360760 F: 03 4360780

E: info@kurowmedicalcentre.org.nz

W: www.kurowmedicalcentre.org.nz

www.facebook.com/kurowmedicalcentre

**Providing 24/7 health care and support to
the people of the Upper Waitaki and Mackenzie**

**Kurow Medical Centre and its satellite clinic
in Twizel Mackenzie Health Centre and
Outreach Clinic at Omarama Community Hall**

are proud to offer our registered and casual patients the following services:

- * Ultrasound performed by a qualified clinician (great for minor fractures, gall stones, kidney stones, heart and lung problems, foreign bodies, blood clots, detecting early pregnancy and much more!)
- * Minor surgery * Vasectomies
- * Mole checks and removal * Steroid injections * Venesection
- * Aviation, workplace and driving medicals * Botox for Wrinkle reduction
- * Workplace health screening * Counselling
- * Spirometry to diagnose asthma and COPD
- * Hearing and sight tests for adults and children * Ear syringing
- * Liquid nitrogen for warts, verruca's, and skin lesions
- * Cardiovascular risk assessment and diabetic checks (funded for eligible patients)
- * Travel advice and vaccination
- * Cervical smears (funded for eligible patients)
- * Seasonal flu shots and shingles vaccine (funded for eligible patients)
- * Childhood Immunisation * Before school checks
- * Postnatal and six-week baby health check

And much more!

**GP consult fees: Under 14yrs Free; Adult \$41.00
Care Plus – Free to eligible patients only**

We also offer the following services from external Health Care Providers:

- *Podiatry and Ear Health (Kurow only)
- *Physiotherapy, Acupuncture and Massage (Kurow and Twizel)

Open

Kurow: Monday to Thursday 8.30am to 5pm. Omarama: Thursday 8.30am to 12.30pm
Twizel: Monday, Tuesday, Wednesday, Thursday and Friday 8.30am to 5pm and Saturday
9am to 12pm

Please note: We provide 24/7 on call after hours cover by our doctors and PRIME nurses for all our registered and casual patients!

**If you require further information or an appointment, please contact us on:
For Kurow 03 436 0760 or for Twizel 03 976 0503 - Dr Tim and Juliet Gardner**

Look us up on our website or Facebook page for more information.



Campbells Butchery Home Delivery

Campbells are now offering daily
meat deliveries to Kurow

Easy as 1,2,3

Give us a call with your order

03 434 8780 extension 1

Your order will be couriered to
your door the next day

(\$5 delivery charge)

Orders over \$50.00 will receive
1KG Beef Sausages free

**Local butchers supplying
Local friendly service**

RIVER CAFÉ



**Delicious Burgers
Fish n Chips
Robert Harris Coffee
Home Baking
Ice creams/Drinks
Friendly Service**



Phone orders welcome!

03 4360 820



Feliz

18 Bledisloe Street, Kurow

03 436 0575

Gifts & More

Something for everyone

NZ Post

Afterpay/Laybuy

Monday 9am - 6pm

Tues-Thurs 9am - 5pm

Friday 9am - 6pm

Sat-Sun 10am - 3pm

www.feliz.co.nz

AVAILABLE AT THE INFORMATION CENTRE

Monday - Friday

- Photocopying*
- Binding*
- Colour printing*
- Laminating*
- WIFI for free*
- Community Car bookings*
- NZTA services*

PHONE 4360 950

 **Whitestone**

FUNERALS

Chapel
Catering Lounge
Westview Crematorium
Westview Memorial
Gardens
Pre-arrange
Pre-pay Options

54 Weston Road, Oamaru, NZ

Call 03 434 8812

whitestonefuneralsoamaru.co.nz

With You On The Journey

S&S PROPERTY CARE



**Interior & Exterior
Painting**

**Looking to get interior
paint refreshed?**

**Wanting an efficient tidy
job?**

Now is the right time to give
Steve a call on: **021 774 019**



Putting the spark in North Otago

0800 360 063

Switchboard Checks & Upgrades, Relocation, Faults

Caravan Warrants

On Call 24/7

Free Quotes

Heat Pump install
& Servicing

Available Day or Night

Property Electrical
Inspections

Surveillance Systems ♦ TV Faults ♦ Solar Installs ♦ Lighting

Hot Water Cylinder & Septic Tank Pumps – connections,
disconnections, faults

Registered Electrician's ♦ Licenced Electrical Inspector's
♦ Licenced Security Consultant

**Carpet Cleaner Hire
Now in Kurow**



\$45.00 for 4 hours

\$55.00 for 8 hours

\$75.00 for 24 hours

\$20 for 1L of carpet shampoo

All hires have a \$20.00 bond

For any enquiries phone

Justine or Puna

03 4360 988 or 027 408 7482

♥ love your hearing

'Hear' For You, Kurow

We're your local hearing experts. Whether you need your first hearing test or you're ready for a new set of hearing aids, **Craig Daunheimer** is 'hear' for you. He'll listen to your story and see you at your appointment - **every time.**

Proactive Hearing Checks & Diagnostic Testing

Hearing Aid Fittings & Maintenance

Tinnitus Support & Advice

Custom Earplugs and Hearing Protection

**Hearing
Tests**

Ages 5 years
and older



Call (03) 434 0373

Kurow Medical Centre
craig@craigdaunheimerhearing.co.nz
craigdaunheimerhearing.co.nz



Proudly 100% Kiwi owned and operated



50 year veteran of the Kurow Bowling Club, Brian Trembath bowled the first bowl at the Club's Opening Day last weekend. An amazing turnout and fun day on the green!

At the Kurow Bowling Club you're always welcome to join us in the wonderful game of lawn bowls. One of the main attractions is that it can be played between men and women of any age. The sport has a history dating back to at least the 14th century. One of its most famous exponents, Sir Francis Drake, felt so strongly about the sport that he insisted on finishing his game before setting off to tackle the approaching Spanish Armada in 1588.

There is a social roll up every Wednesday afternoon starting at 1.30pm. Everyone is welcome to come along and have a go at this wonderful sport. Anyone can play. We will provide all equipment and our friendly members will be on hand to show you the ropes.

Call Izzy on 027 6660450



A20 ELECTRICAL

*Servicing all your electrical needs - big or small,
we've got it covered.*

We are now a service agent for a variety of household and commercial whiteware appliances.

Phone: 022 1893 250 Email: rob@a2oelectrical.com



BRADYS HANDYMAN SERVICES

BASED IN WAIMATE

ALL HANDYMAN WORK & CHIMNEY SWEEPING

PHONE PAUL: 021 202 0804



TWIN FISH

*Love your bungalow
Love your farmhouse
Love your villa
Love your modern build*

Recycled native timber currently in stock: Rimu

Owen King, Joiner
SH83 Otekaieke, Waitaki Valley

022 243 6470

officetwinfish@icloud.com

Golden rules for Alert Level 2



Everyone can return to work and school.



Use the NZ COVID Tracer app to scan in everywhere you go, and have Bluetooth tracing turned on.



Wear a face covering when you go out and about.



If you have cold or flu symptoms, isolate immediately and call Healthline for advice about a test.



Get vaccinated.



Physical distance 2m from others in public.



Tall Poppy™

Covering the Waitaki Valley with over three decades in the Real Estate industry in the Waitaki, Central Otago, and Mackenzie Country.

Based in Omarama, with the Tall Poppy offer of **fair flat fees** and our **free marketing package**.

It's no wonder Tall Poppy is New Zealand's fastest growing (organically) Real Estate Company.

**Thinking of selling?
Let's talk**

Gary Sutherland
AREINZ

027 432 661

gary.sutherland@tallpoppy.co.nz



WHALAN LODGE TRUST

CHAIRMAN'S REPORT

The unanimous decision from the Waitaki District Councilors to lend the Whalan Lodge Trust \$780,000 was crucial to our development project and we appreciate their support.

The terms of the loan are very favorable and we can now get structural plans drawn up and then apply for the building permits.

The first stage is to replace the tiled roof, extend the dining room and relocate the kitchen, as well as creating 5 new bedrooms.

Replacing all the windows and doors with double glazing, redecorating the hallway and some bedrooms, and building a covered entranceway will hopefully be funded by other parties who have been contacted and have indicated support.

Our financial situation is sound. The community support-donations, fundraising, grants and time given played a significant part in this.

Although the grant monies have been used on the areas to which they were allocated, it still leaves a reasonable safety net in case of a sudden change in circumstances. It is important for our well being that this account is kept in a healthy state.

Sarah Green has resigned as our Facility Manager. In the four years that she has been in charge the reputation of the Lodge has uplifted to a level where we have a full house and a waiting list and most importantly a three year Ministry of Health certification which is recognition of her leadership, our Nurse Manager and all of our staff. An email from the manager of the Health of Older People, Southern DHB congratulated them on "an amazing result". Sarah is a person with a wide range of personal skills and a very caring personality.

On behalf of our residents, staff and the Trust I would like to thank Sarah and Tony too, for all the things he did behind the scenes. We will miss you.

We are also losing Brittney who has played a major part in the running of the Lodge. She has always gone above and beyond her call of duty. Thank you Brittney for all the care and dedication you have given the residents. We will miss you and wish you all the best.

All staff have attended training courses and gained certificates in Aged Care. It is reassuring to know that all are confident and well qualified.

A big thank you to Karen Hofman who retired during Covid lockdown but still turns up as a volunteer whenever she is needed. Her commitment is outstanding.

Mike Sargent supplied his digger and time and made a massive clearance of the trees and rubbish behind the Lodge. When the heaps are burnt, it will leave the area very tidy.

Mike's generosity is typical of the support we receive from our community. We are very grateful, thank you Mike.

All the fencing gear has been supplied to renew fences at both ends of the section. This will make it stock-proof.

Russell continues to keep the grounds in immaculate condition. He also turns up and fills the wood boxes every day. Thanks Russell for going the extra mile.

A significant amount of work has gone into the rebuild planning and in the coming year we should see the results.

I would like to thank our Trust members, our secretaries Susan Scott and Judy Croft, and Gaye Schurgers who handles all financial matters for their commitment and dedication.

And to those who help behind the scenes your contributions are invaluable.

Barney McCone
Chairperson



WAITAKI VALLEY
COMMUNITY SOCIETY

**Waitaki Valley Community Society AGM will
be held on 27th October 2021 at 7pm
In the Back Bar at Kurow Hotel**

In order to present audited accounts each year at the AGM, the Executive propose changing **Rule 10.1 (in relation to the AGM)** from “An AGM of members shall be held before the end of October each year” to “An AGM of members shall be held before end of November each year”

Nomination forms are available from the Information Centre and must be received by 3pm, 25th October

PGG Wrightson



Free ham!

With qualifying purchases of Corteva™ Agriscience products from PGG Wrightson.

Purchase 2 x 20 L Tordon™ Brushkiller XT, 1 x 20 L of Tordon™ PastureBoss™ or 1 x 20 L of Korvetto™ between 1 October 2021 and 30 November 2021, and receive a free 100% New Zealand half ham on the bone!



For use on non clover pasture



For use on forage brassicas



Don't forget, Slikka is a necessity for your spray out.

For use on gorse

Terms and Conditions: Offer valid from 1 October 2021 to 30 November 2021, or while product and ham stocks last at the PGG Wrightson Southland and Otago stores only. 100% New Zealand half hams will be available from 14 December 2021. Approximate ham size is 4.5 - 5kg, cooked on bone. Limit four hams per customer. Some products may not be available in all stores but may be ordered on request. Prices do not include delivery, delivery costs are additional. Our Customer Terms of Trade/Sale located at www.pggwrightson.co.nz apply to the sale of products listed here unless specified otherwise. Images are for illustrative purposes only.



St Stephen's Presbyterian Church

We have commenced our 10am weekly Sunday Services
Everyone welcome

Any enquiries to Neil: 4360 220 or June: 4360 414

Upcoming Special Services

Sunday October 31st Presbyterian Support
Thursday November 18th, 7pm Remembrance Service

Waitaki Whitestone Geopark

ROADSHOW

Coming near you!

KUROW

Thursday 28 October
7pm - Kurow Memorial Hall

PALMERSTON

Wednesday 10 November
7pm - Palmerston Sports Hall

ŌAMARU

Wednesday 17 November
7pm - Scottish Hall

ŌMĀRAMA

Wednesday 24 November
7pm - Ōmārama Memorial Hall

VIRTUAL (Zoom)

Wednesday 8 December
7pm - Email us for the link:
info@whitestonegeopark.nz



Where people come together as kaitiaki of the land and its stories.

Geopark still a mystery?

What is a Geopark?

What are we up to?

What does it mean for your community?



Join us on one of these dates and find out more about how the Geopark can support your community.

For more information visit:

www.whitestonegeopark.nz

All gatherings will take place under strict Covid-19 Alert Level rules.



rockgasTM
Waitaki

One stop shop for Gas. Locals Supplying Locals
45kg gas bottles regularly delivered

Otematata-weekly

Omarama - weekly

Twizel and Tekapo -2x weekly

Kurow – fortnightly

Oamaru- daily Mon-Fri

And all areas in between.



Down load the App

Ph 0800 433 4574

Order online - Rockgas.co.nz or www.hiflo.co.nz

Need Gas installed check out www.hiflo.co.nz or phone 03 433 0011 or info@hiflo.co.nz we have an experienced team in Oamaru and Twizel.

Check out

www.kurow.org.nz

For events, and to reacquaint yourself with the Valley or to read the Bugle Online



J Rapsey
FENCING



Phone:

027 786 0879

Email:

john.rapsey14@gmail.com

NIGEL GRANT FENCING

Specialist in Sheep, Deer, Cattle,
Post & Rail, Yard, Electric & Pivot

NIGEL GRANT

Ph 027 436 0964

A/H 03 436 0964

**MICHAEL
WILLS**
CONTRACTING LTD



*Operating in Waitaki & Haka Valleys
for over 25 years.*

*Local knowledge, experienced operators,
modern machinery*

Silage, Balage, Direct Drilling, Maize & Fodder Beet Planting

Ph. 027 221 0826
to discuss your contracting needs



Waitaki Spraying Ltd

Chris Horn

P: 021 2702809

E: mail@waitakispraying.co.nz



Brett Green

021 209 4809

(03) 4360 229

Baling

Wrapping

Tube and Individual

Fencing

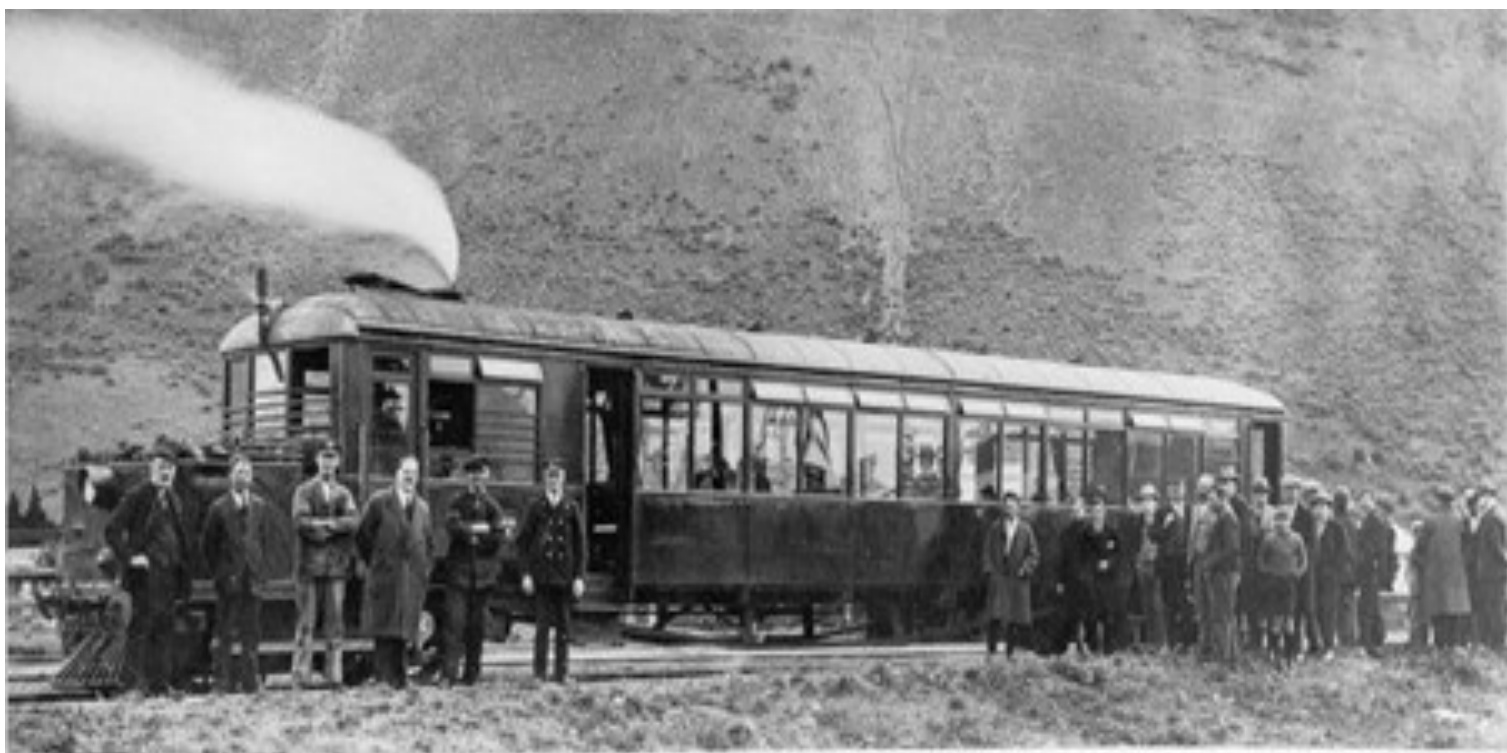
The Clayton Rail Car

(The author of the following account from the Kurow Museum records is unknown. The manner and style in which it was first typed has been retained.)

The New Zealand Railways Department, as ever, was endeavouring to keep abreast of world trends in passenger transportation and combat the competition of road vehicles. Several types of steam- or battery-propelled rail cars were imported the last of the steam cars being the Clayton car which began its brief running on the Oamaru – Kurow service from Wednesday, 4 August, 1926.

Built in England by Clayton Wagons Limited of all steel construction this 58' 2" (18m) long, 8' 2½" (2.5m), eight-wheeled, one compartment vehicle weighed in working order 24 tons 3 cwt (24.5 tonnes), with seating for 54 passengers. Although it is said that at one Christmas period no less than

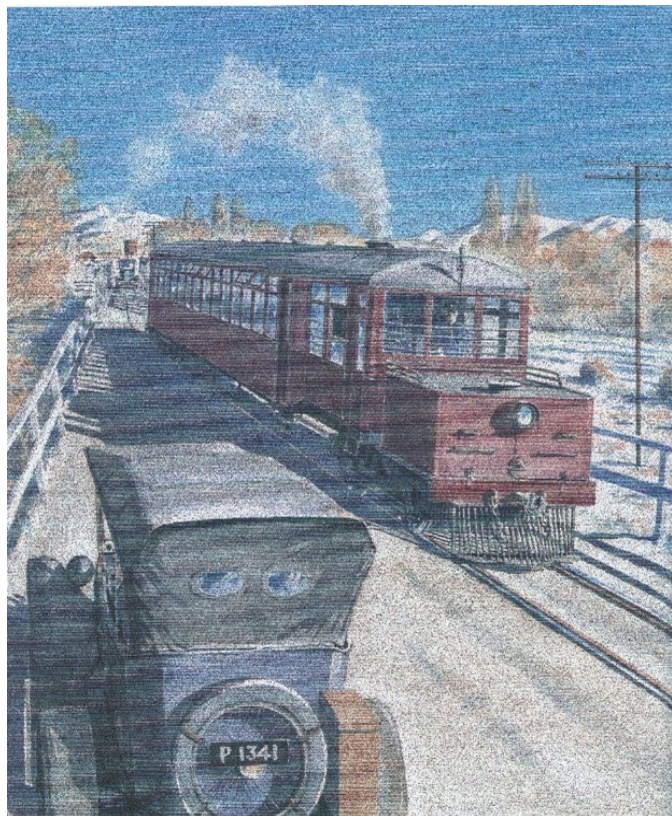
Number RM2 and painted bright red externally this rail car was powered by a vertical boiler supplying superheated steam at 230 lbs per square inch to two cylinders of six and three



quarter inches (17cm) in diameter with a stroke of ten inches. During the initial tests a larger boiler was installed together with other modifications. At 450 r.p.m the engine developed 84 horsepower (62.7 KW) with gear transmission to one driving axle. Outside rods coupled to another set of 3' 6" (9cm) diameter wheels gave additional rail traction. The designed maximum speed was 45 m.p.h (72kph) on level track and the rail car was normally run with the driving bogie leading; it could however, be driven from either end. Train tablets were exchanged at Pukeuri and Oamaru in cane hand slings.

Electric lighting, steam heating, throw over seating of contemporary style, brown floor linoleum, overhead luggage racks and curtains for the wide fixed windows were provided for the comfort of passengers who were charged the ordinary class fares. The designers omitted to provide toilet facilities, sufficient provision for the carriage of heavy luggage, prams, parcels and dogs; all indispensable requirements on a New Zealand train. A light steel framework, laced with netting, was fastened outside at the rear of the car with leather straps, a canvas cover giving security and protection from the weather. As a last resort prams were sometimes carried on top of the coal bunker. These prams interfered with the driver's vision, but he made sacrifices rather than disappointment young mothers. At the request of the postal authorities a Late Fee letter box was later provided as were pigeon holes for railways

correspondence. Dogs were carried on special boxes inside the luggage crate, much to the disgust of the high country shepherds who did not like their animals so conveyed. Complaints were also made (*sic*) of their lack of ventilation – the side windows were fixed – and of heat from the boiler and fire-box which were separated from the passenger carrying compartment by a thin partition. On really hot summer days with all six roof ventilators open it was also necessary to keep the side doors open – contrary to regulations – to cool the car and clear away the cigarette smoker. The small, outward opening, fanlights did little to assist with the air changes.



Messrs Phil Olliver and Bert Bateman were the regular driver and fireman with Fred Quaife its guard. Spark arresters were apparently not too efficient and it is said that during its relatively short term of service on the Kurow line the Clayton car set fire to every paddock on each side of the line. Imported hard coal was supplied and the fireman using an ordinary kitchen type shovel dropped the fuel on the fire via a chute through the top of the boiler.

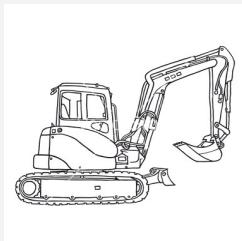
The car was taken on several trial runs after its arrival from England in the autumn of the year 1926. Between Wellington and Palmerston North under normal conditions the good running time of two hours fifty minutes for the 87 miles (135km) was recorded. The car ran from Christchurch to Oamaru on Saturday 31 July; a timing was made on the following Monday to Kurow and return and regular running began two days later.

The crew were very obliging, often stopping at the level crossing nearest the passengers' home to set them down or permit them to board the railcar. This service was maintained until Saturday, 10 November 1928 when the car was replaced by an ordinary steam service, running on the same schedules.

Increasing passenger traffic created by the hydro construction and an impending major overhaul made the changeover necessary. The passenger service was regularly run until 12 July 1930, when economies brought about by the depression changed it to a "Mixed" train. This led to many complaints from the travelling public.

Following an overhaul at Hillside Workshops the Clayton car entered service on the Invercargill-Bluff line running an off-peak-hour service from Mondays to Fridays. The Clayton car was taken off the road on Friday, 17 September 1937 and did not run again. It was written off sometime in January 1938.

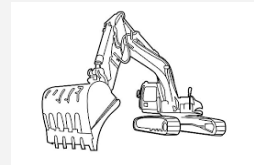
The above painting by Barry O'Donnell depicts RM2 crossing the combined road-rail bridge over the Maerewhenua River bound for Oamaru.



DIG IT MACHINE HIRE

0800 716 052

Excavator Dry Hire



We have several sizes of excavator available up to 14 ton
Transporter and truck hire also available

Call for rates and availability



❖ Ag Lime

❖ Track Rock

Duntroon

Freecall: **0800 002 639**

Superior Products @ Competitive prices

Mobile: **0274 383 595**

*A division of BR Jones Contracting Ltd - Diggers, Bulldozers, Truck Hire and more.
Specialising in earthmoving, track work, effluent ponds, irrigation ponds and dairy conversions.*



**PLEASE CONTACT BEN FERGUSON FOR
TEST RESULTS, PRICING
AND LIME ORDERS**

0274 742 899

WINTERBURGLIME@GMAIL.COM

Registered Electrician

- For all things electrical
- Large or small
- Domestic and commercial
- Prompt service
- Reasonable rates
- Free quotes

Try the friendly team at **ELECTRO SPEC 2007 LTD**

Phone Mark 027 264 0404



WAITAKI GLASS AND GLAZING

"Craftsmen in Glass"

Up the Valley once a week—We won't be beaten on quality or price

*"Experts for replacement double glazing with over 45 years experience,
10 years unconditional guarantee on labour and materials"*

CALL TODAY—FREE QUOTE

Phone 03 437 2448 03 434 1440

or 027 434 1010

waitakiglass@gmail.com

DeGeest Yard, 3 Main North Road, Oamaru

PUNA KERR SHEARING



For all your shearing
crutching and tailing requirements

Phone Puna and Justine on

03 4360 988 or 027 408 7482

LOOKING AFTER THE LOCALS



MENTAL HEALTH SUPPORT GROUP

The Waitaki Mental Health Support group meet twice a month in Kurow and seven times a month in Oamaru.

We meet to give and receive Peer Support in the face of or surviving mental distress.

Phone or Text 027 282 0615 for more details.


Survey Waitaki
surveying • planning • engineering

Contact: Cameron Leckie

Phone: (03) 434 8020

Cell: 021 496 780

Office: 27a Coquet Street, Oamaru

Email: cameron@surveywaitaki.co.nz

Web: www.surveywaitaki.co.nz

OFFERING A WIDE RANGE OF SURVEYING SERVICES

- Subdivision & Boundary Adjustment
- Land Development
- Precision Farm Mapping
- Easements
- Resource Consent & Council compliance

DRAFTLINE LTD Patrick Coll NZCO Arch

10 Beswick Street, Timaru

P 03 688 8455 E office@draftline.co.nz

www.draftline.co.nz



FOR ALL YOUR ARCHITECTURAL DESIGN & DRAUGHTING NEEDS

Otago Rural Support Trust

When circumstances beyond your control lead to a rural business crisis — be it financial, climatic or personal — the Otago Rural Support Trust is ready to assist. Services are free and confidential.

Phone **0800 787 254**



Painting— Exterior & Interior
Phone Greg on 027 740 9552



Check out

www.kurow.org.nz

For events, and to reacquaint yourself with the Valley or to read the Bugle Online



COLIN DAVIDSON

AUTO ELECTRICIAN

Batteries • Alternators • Starter Motors • Computer Diagnostics • Air Conditioning

Automotive Electrical on Tractors, Trucks, Boats, Cars and Caravans

www.waitakiautoelectrics.co.nz • 027 4633 822 • 13 Grey Street, Kurow



SOUTHERN LAND

CKL

03 443 5577

Email vergne@southernland.co.nz

Vergne Wilson
RPSurv, B.Surv, NZCE (Civil)
Registered Professional Surveyor

Weekly in Kurow and surrounding districts.
Please phone to discuss your project

Subdivisions * Boundary Relocations * GPS Surveys
Farm/ Property Mapping * Contouring * Vineyard Set out
*** Land Development Engineering * Resource Consents**

DEVINE CONSTRUCTION LIMITED

- New builds
- Renovations
- Concrete Work
- Alterations
- Re-Clads
- Roofing/Spouting
- Insulation
- Windows/Doors



Phone Toby: 022 102 4988



QUALITY WORK
GUARANTEED

FOR ALL YOUR EARTHMOVING NEEDS
MACHINES AND
COMPACTORS FOR HIRE

CALL GARY ON: 0274 373 668
OR (03) 4360 778

WEB: www.garyhawkins.co.nz

Contact the team for all your Brassica *needs*

Come and see your local team at North Otago Pastoral Services

We can discuss all your seed requirements. With the only seed mixing and seed treatment plant in Oamaru, our NOPS team can also provide local expert advice on all your brassica and regrassing needs.



Kelvin Mansfield
Manager

027 544 1171



Gerard Dawson
Assistant Manager

03 434 7766



Andrew Harding
Agronomist

021 190 0849



Nick Walters
Agronomist

027 244 4057



Craig Direen
B.AgSc Agronomist

021 109 1087



Matthew Paton
B.Ag Snr Agronomist/
Key Acct Manager

027 443 4701

Come See the team at North Otago Pastoral Services